



# 305

## 305 C Series

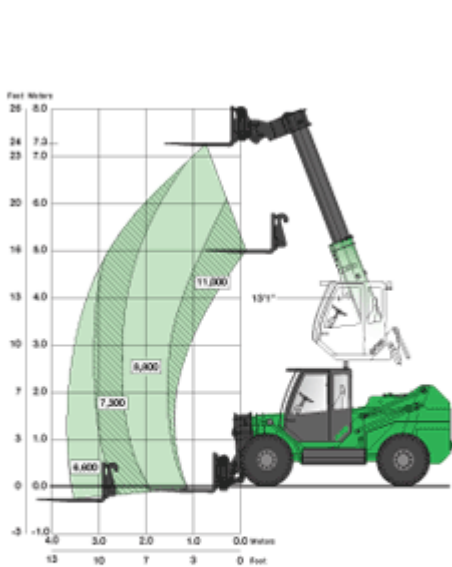
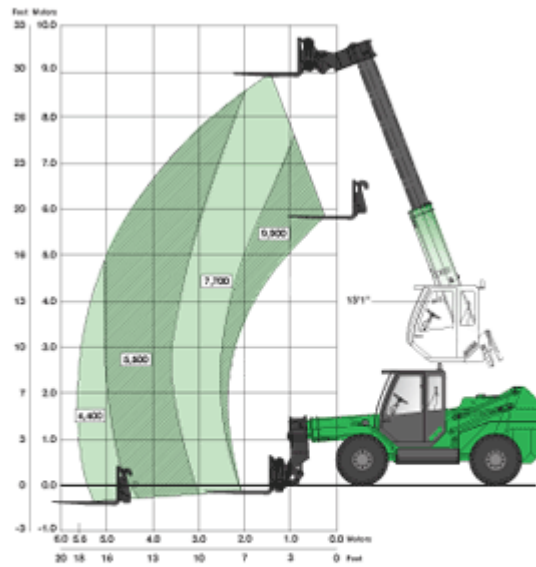
**Engine** 102 HP  
**Working Radius** 8.8 Metres  
**Operating Weight** 11,522 Kilos



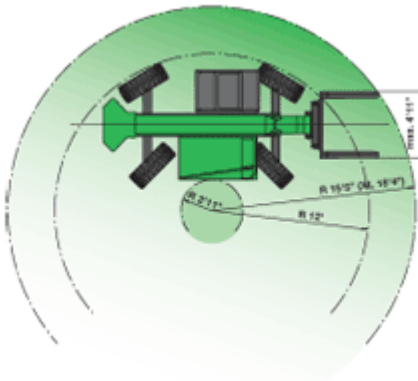
### Machine Specifications



■ Overall height may reach 8'10" with additional lights, flashing beacon and 425/75/R20 tires


**Working area and rated loads 305 C**

**Working area and rated loads 305 XL**
**Notes:**

1. The rated loads are based on 80% of tipping load (ISO 8313).
2. Rated lift capacities shown are with the machine equipped with carriage and pallet forks. The load center is 24" from the fork carriage. If other attachments are used, the weight of such attachments has to be deducted from the above loads.
3. The machine must be level on a firm surface with undamaged, properly inflated tires.
4. Machine specifications and stability are based on rated lift capacities at specific boom angles and boom lengths. (If specifications are critical, the proposed application should be discussed with your dealer.)
5. DO NOT exceed rated lift capacities loads, as unstable and dangerous machine conditions will result.


**3 Steering Modes**
