

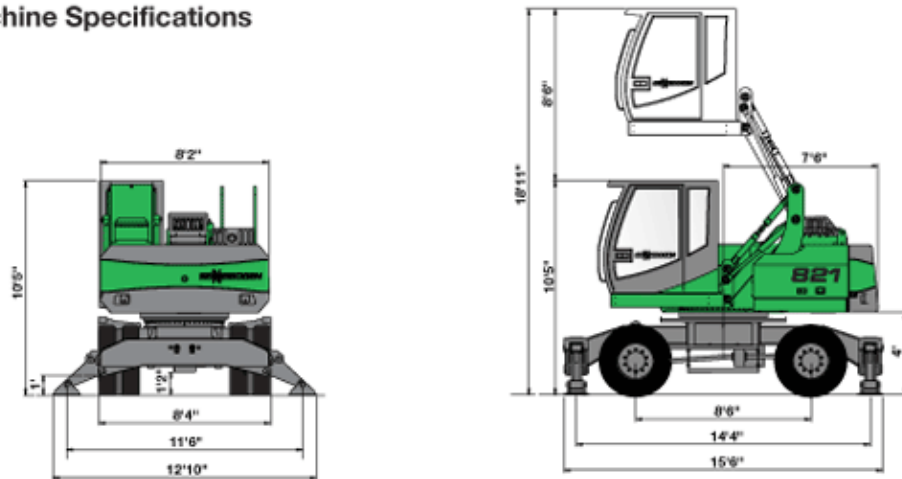
821

821 M C Series

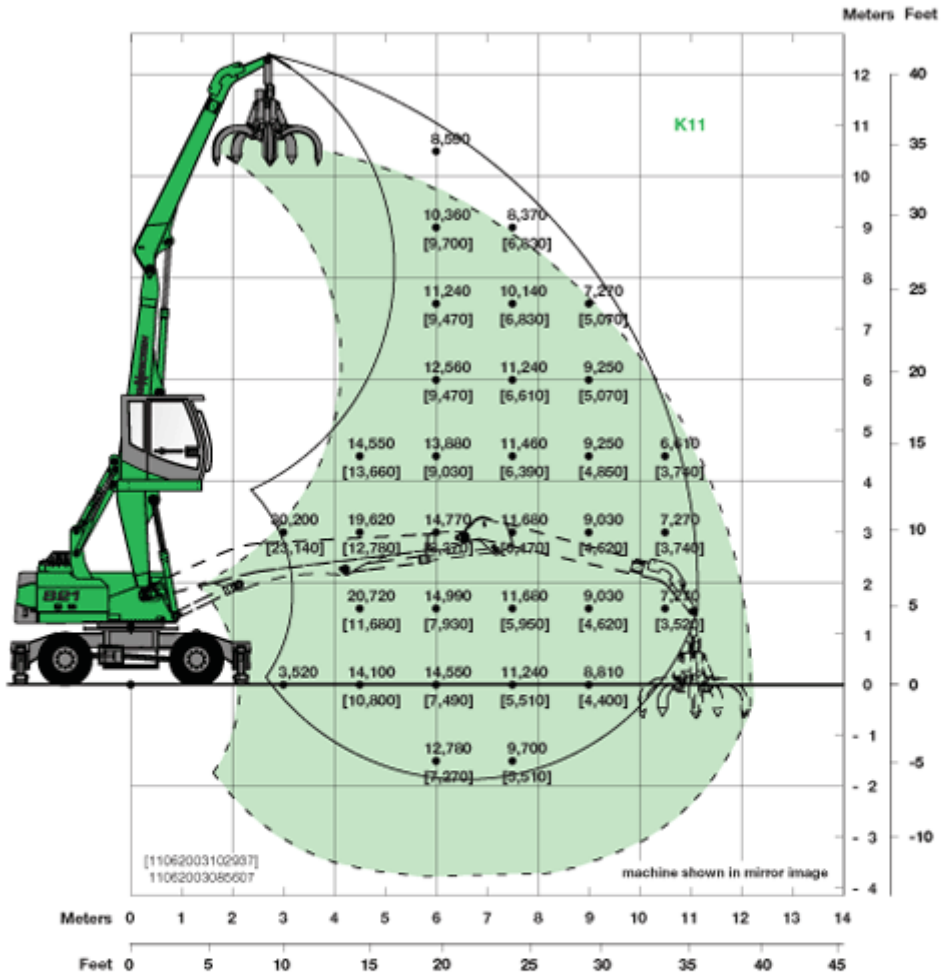
Engine	142 HP
Working Radius	13.4 Metres
Operating Weight	24,545 Kilos



Machine Specifications



- 821 M with 8'6" hydraulic elevating Cab Type C 270
- 821 M available with optional hi-rise cab – height 3'3", 4'11" and 6'7". Hydraulic tilting mechanism is standard on all hi-rise cabs

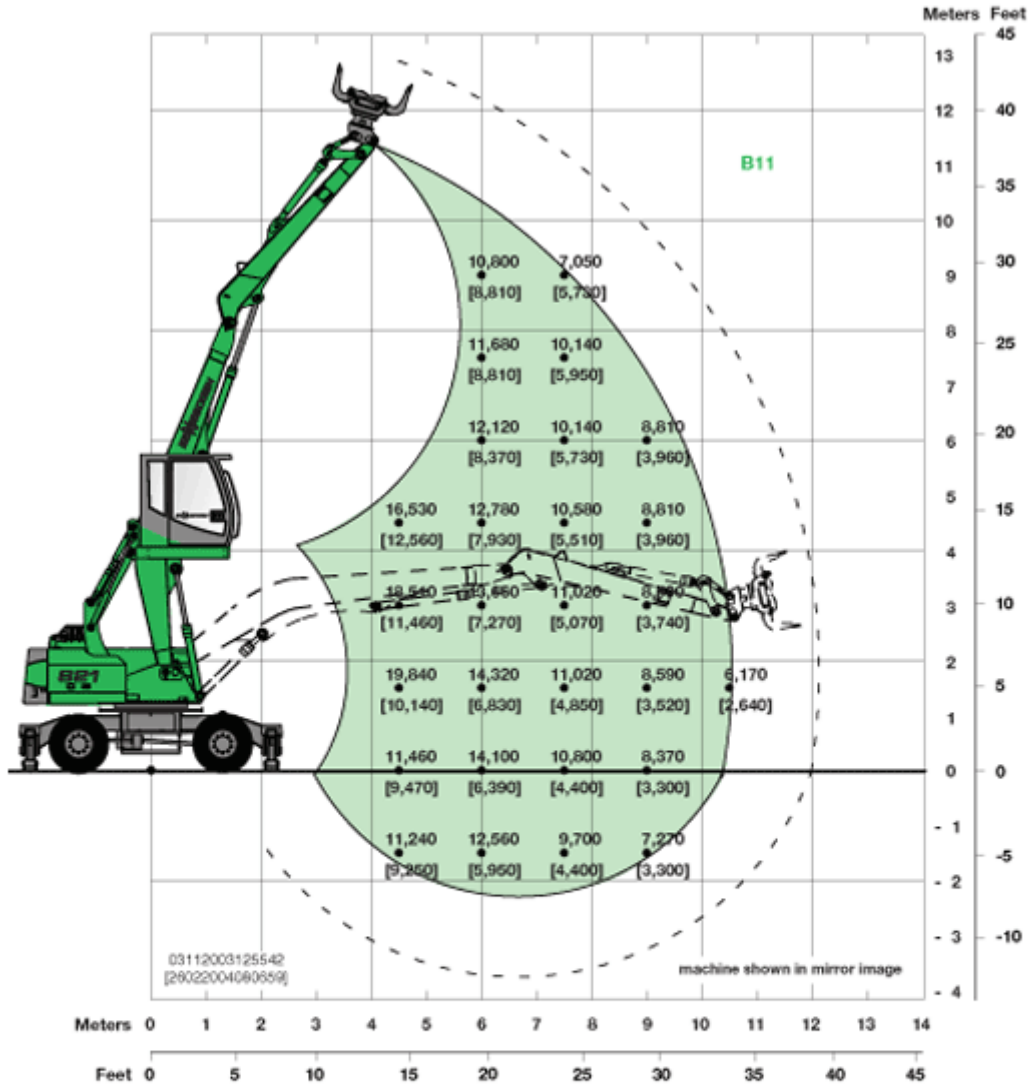


821 M

- Undercarriage: MP21, 4-point outriggers, tires 8 x 10.00-20
- Boom: 21'
- Stick: 15'9"
- Cab: C 270 hydraulic elevating cab with operator's eye level 18'5"

Load chart

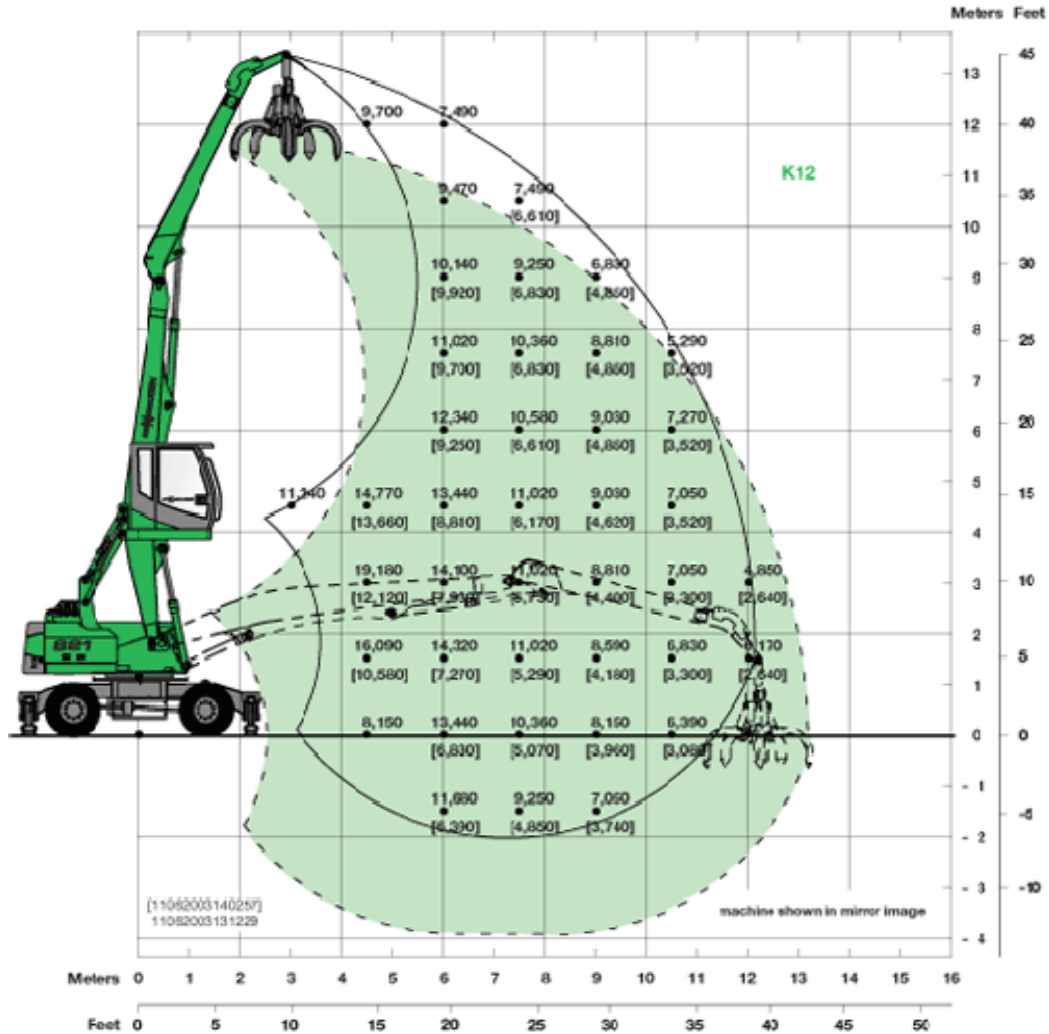
Notes:
 Lifting capacities are stated in pounds. Indicated loads are based on ISO 10567 and do not exceed 75% of tipping and 87% of hydraulic capacity. Machine on firm, level supporting surface. Loads valid for 360° on outriggers supported.
 Loads in [...] are valid 360° free on wheels.
 Lifting capacities do not include working attachments such as scrap grapples, magnets, etc. Their weights must be deducted from the numbers indicated in the lifting charts.



With disassembled reversing mechanism, the rated loads have to be raised by approximately 550 lbs.

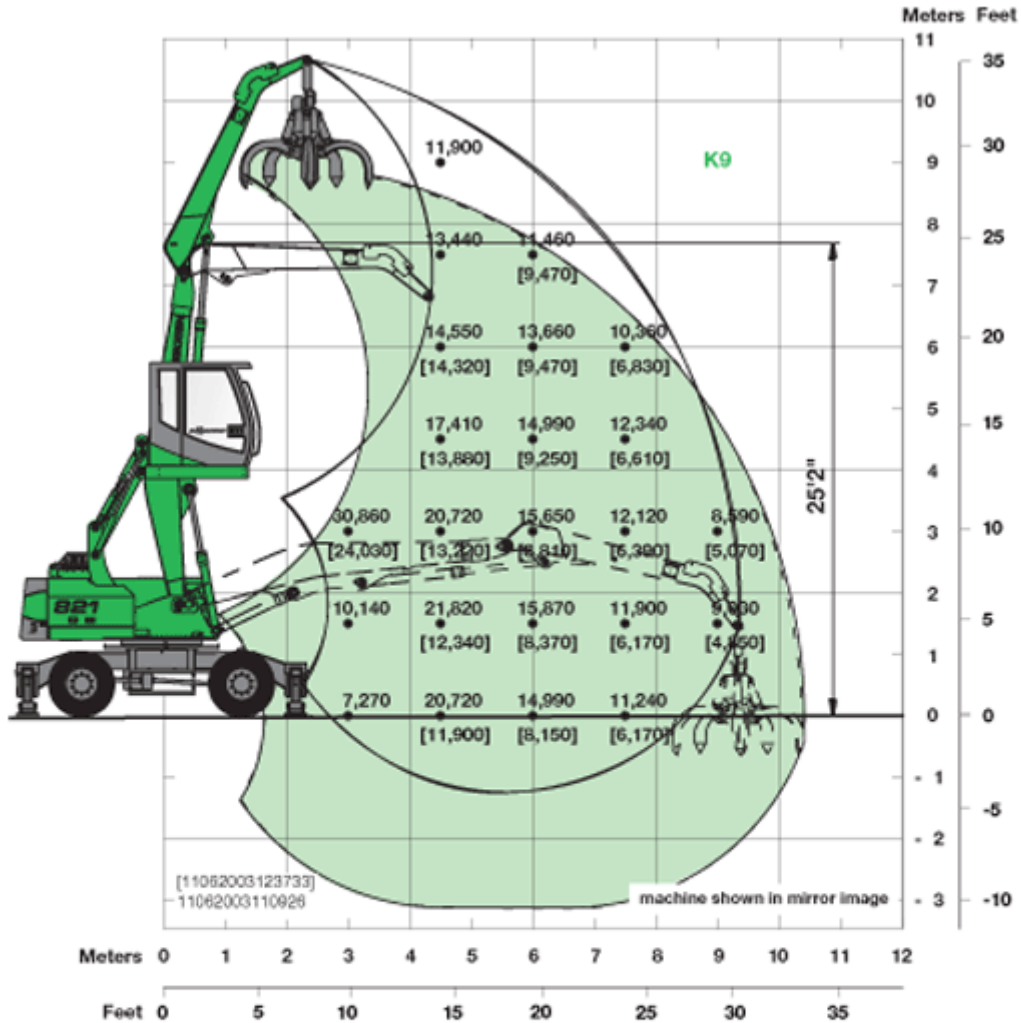
B21 M

- Undercarriage: MP21, 4-point outriggers, tires 8 x 10.00-20
- Boom: 21' banana type
- Stick: 13'9" with reversing mechanism
- Cab: C 270 hydraulic elevating cab with operator's eye level 18'5"



821 M

- Undercarriage: MP21, 4-point outriggers, tires 6 x 10.00-20
- Boom: 23'4"
- Stick: 16'9"
- Cab: 270° hydraulic elevating cab with operator's eye level 18'5"



821 M

- Undercarriage: MP21, 4-point outriggers, tires 8 x 10.00-20
- Boom: 17'9"
- Stick: 13'1"
- Cab: C 270 hydraulic elevating cab with operator's eye level 18'5"