

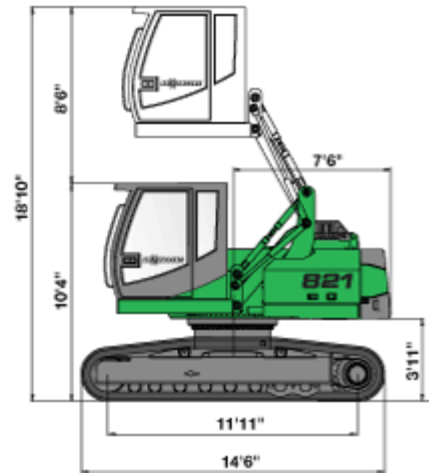
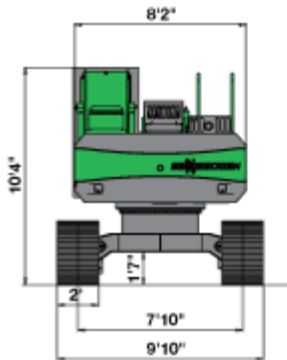
821

821 R C Series

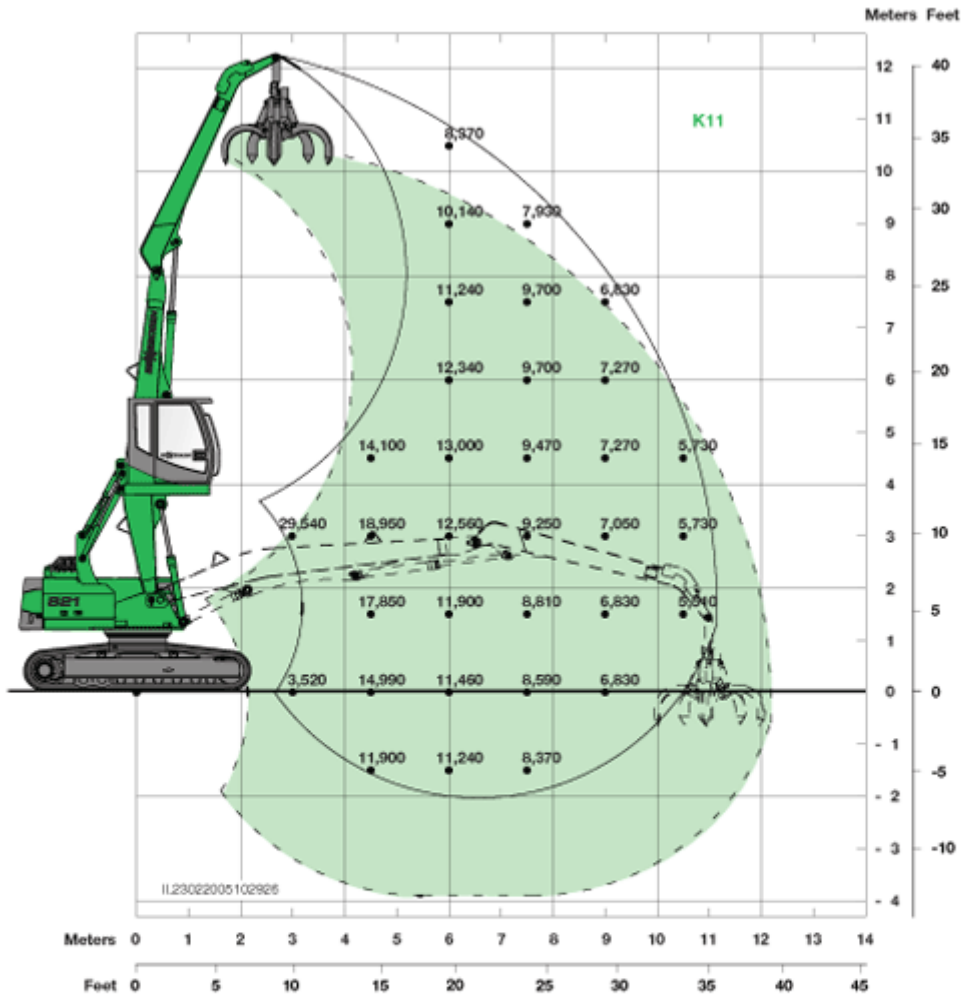
Engine 142 HP
 Working Radius 13.4 Metres
 Operating Weight 23,454 Kilos



Machine Specifications



- 821 R with wide gauge crawler undercarriage R25 and with 8'6" hydraulic elevating Cab Type C270
- 821 R available with optional hi-rise cab – height 3'3", 4'11" and 6'7". Hydraulic tilting mechanism is standard on all hi-rise cabs

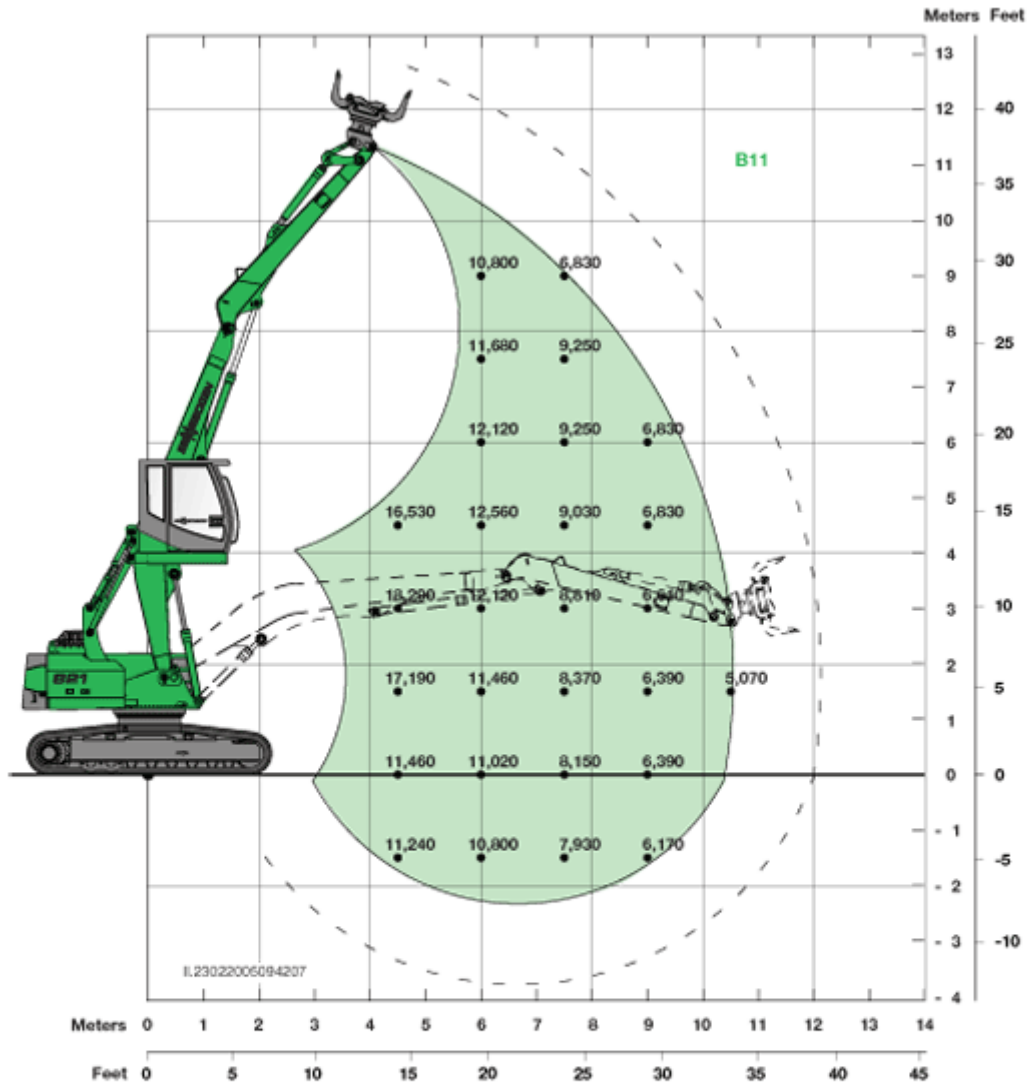


821 R

- Undercarriage: R25 wide gauge crawler undercarriage, crawler length 14'6" 21'
- Boom: 15'9"
- Stick: C 270 hydraulic elevating cab with operator's eye level 18'4"
- Cab:

Load chart

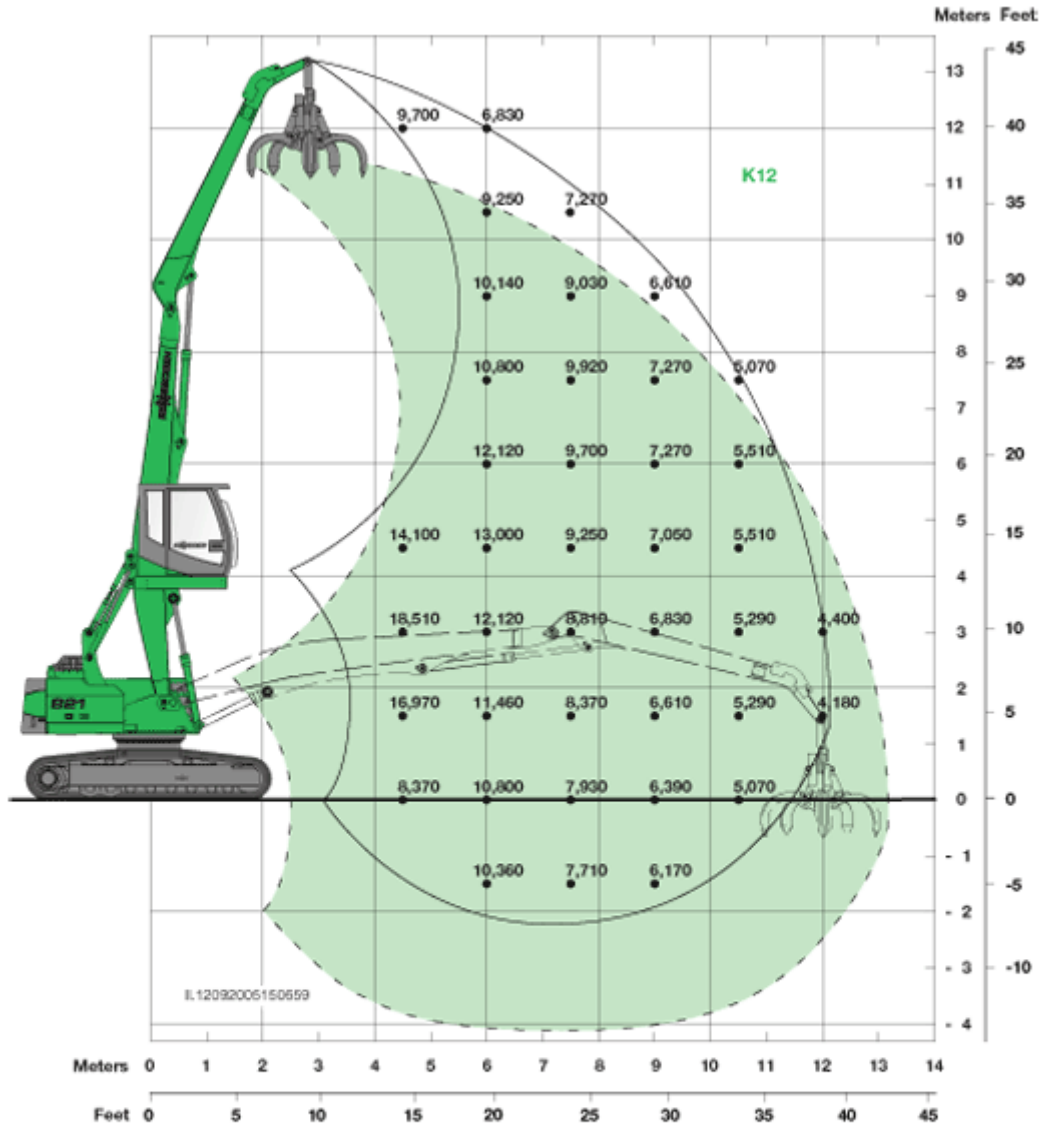
Notes:
 Lifting capacities are stated in pounds. Indicated loads are based on ISO 10567 and do not exceed 75% of tipping and 87% of hydraulic capacity. Machine on firm, level supporting surface. Loads valid for 360° with maximum extended undercarriage.
 Lifting capacities do not include working attachments such as scrap grapples, magnets, etc. Their weights must be deducted from the numbers indicated in the lifting charts.



With disassembled reversing mechanism, the rated loads have to be raised by approximately 550 lbs.

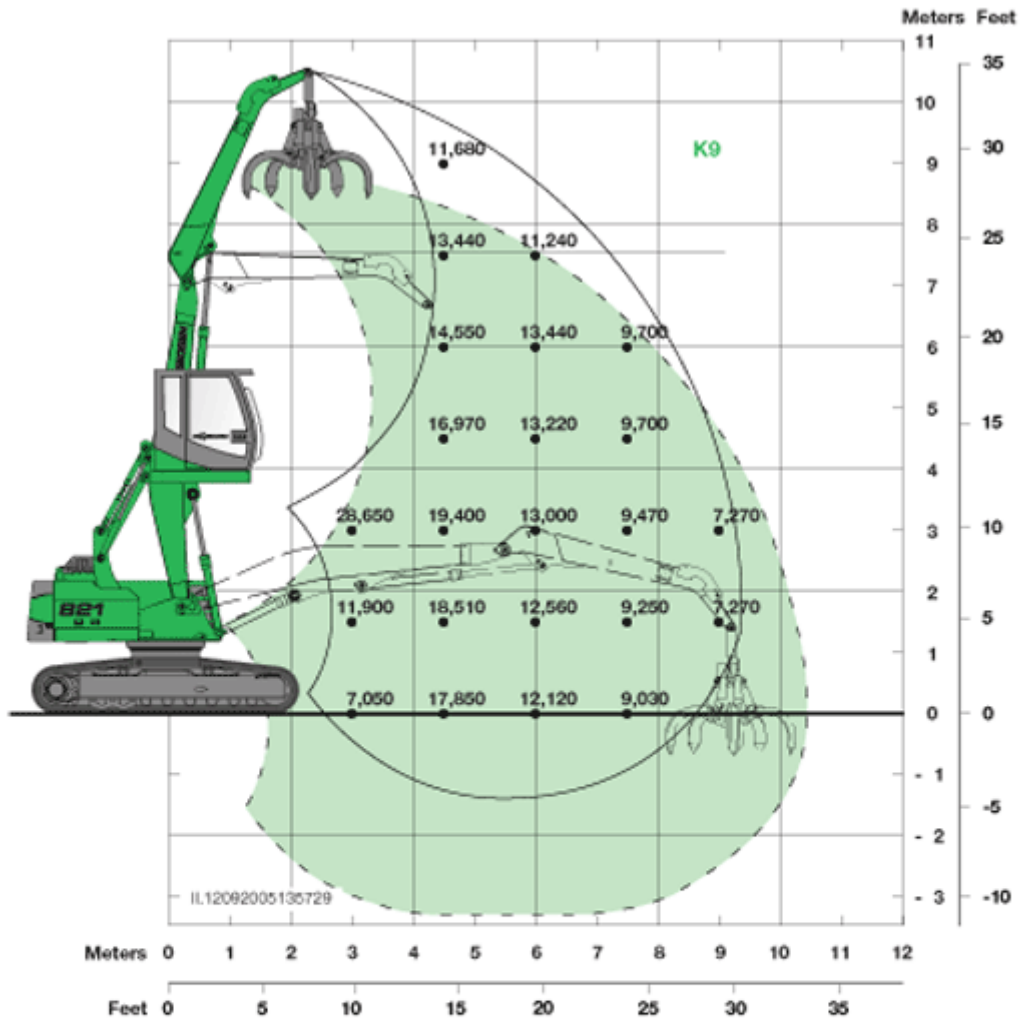
821 R

- Undercarriage: R25 wide gauge crawler undercarriage, crawler length 14'6"
- Boom: 21' banana type
- Stick: 13'9" with reversing mechanism
- Cab: C 270 hydraulic elevating cab with operator's eye level 18'4"



821 R

- Undercarriage: R25 wide gauge crawler undercarriage, crawler length 14'6"
- Boom: 23'4"
- Stick: 16'9"
- Cab: C 270 hydraulic elevating cab with operator's eye level 18'4"



821 R

- Undercarriage: R25 wide gauge crawler undercarriage, crawler length 14'6"
- Boom: 17'9"
- Stick: 13'1"
- Cab: C 270 hydraulic elevating cab with operator's eye level 18'4"