



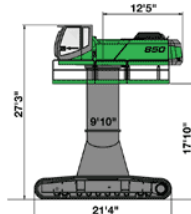
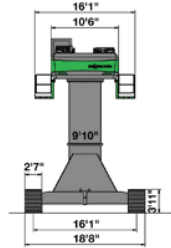
850

850 *special C Series*

Engine	330 HP
Working Radius	22.8 Metres
Operating Weight	59,090 Kilos



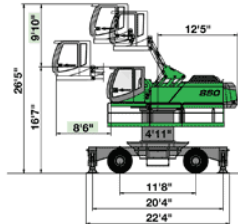
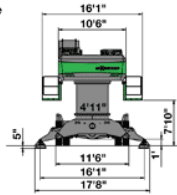
Machine Specifications


850 R special

- Wide gauge crawler undercarriage R83/490 with 6'7" pylon integrated. Additionally, Sennebogen offers pylon heights 9'10" and higher.

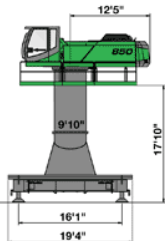
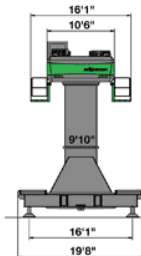
850 M special

- Wheeled undercarriage MP50 with pylon 4'11"



Measurements based on standard tires 12.00-24.

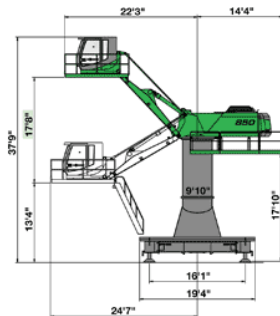
Transport height and width will increase approximately 2" with tires 14.00-24.


850 S special

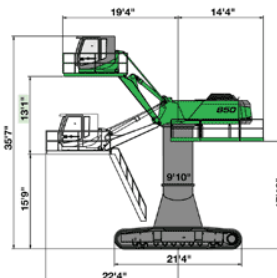
- Free floating steel structure ST83/490x490 with 6'7" pylon integrated. Additionally, Sennebogen offers pylon heights 9'10" and higher.

850 S special

- Skylift Cab 600 / F2000

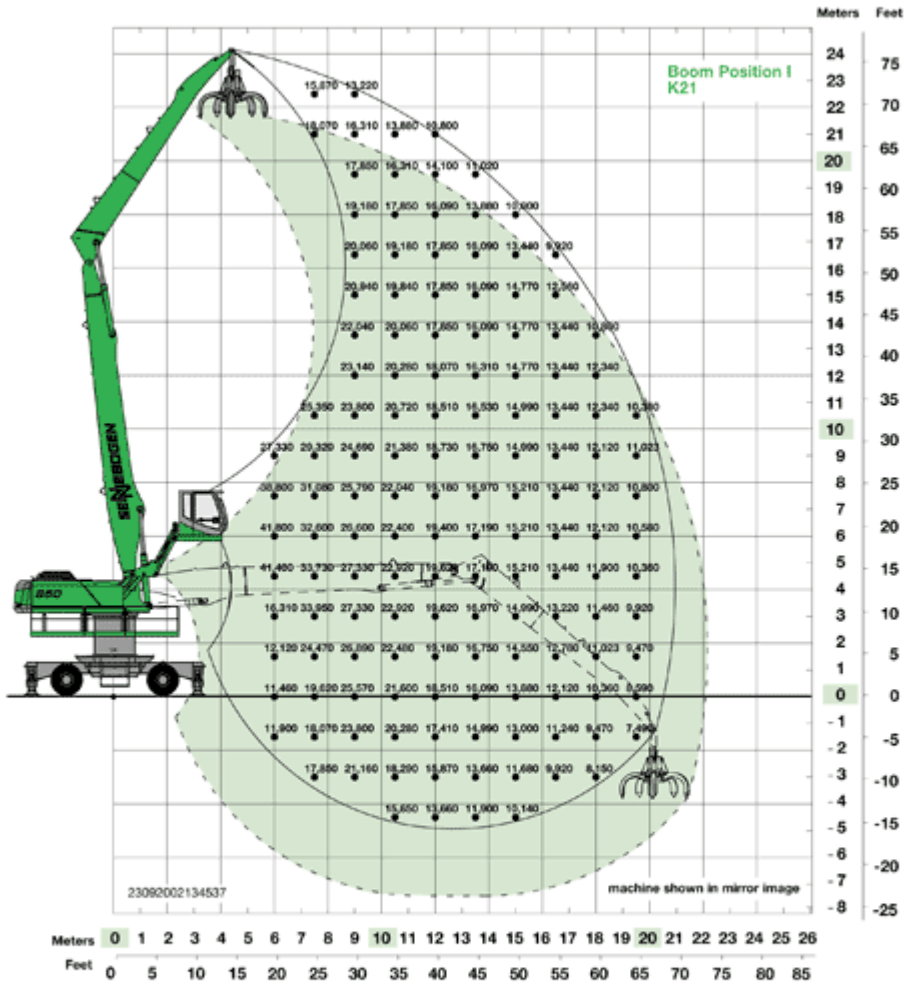

850 R special

- Skylift Cab 400 / F2000



Depending upon tolerances, measurements may vary.

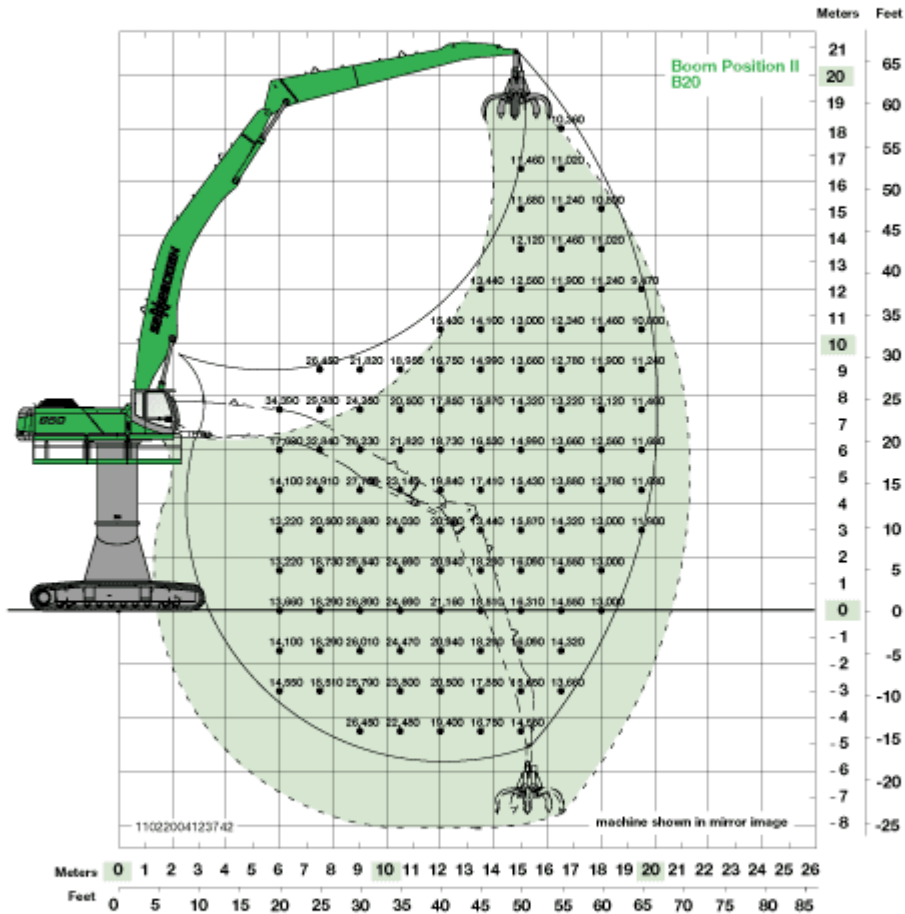
SENEBOGEN
 green line

850 special

850 M special

- Undercarriage: MP50, tires 8 x 12.00-24 with 4-point outriggers
- Pylon: 4'11"
- Boom: 39'8"
- Stick: 31'6"
- Boom position: I
- Cab: C 300/260 hydraulic elevating and forward moving cab with operator's eye level 25'11"

Load chart

Notes:
 Lift capacities are stated in pounds. Indicated loads are based on ISO 10567 and do not exceed 75% of tipping and 87% of hydraulic capacity. Machine on firm, level supporting surface. Loads valid for 360° on outriggers supported.
 Lifting capacities do not include working attachments such as scrap grapples, magnets, etc. Their weights must be deducted from the numbers indicated in the lifting charts.


850 R special

- Undercarriage: Wide gauge crawler undercarriage with crawler B7, crawler length 21'4"
- Pylon: 9'10"
- Boom: 39'1" banana type
- Stick: 31'6"
- Boom position: II
- Cab: Fixed F2000 with operator's eye level 26'9"